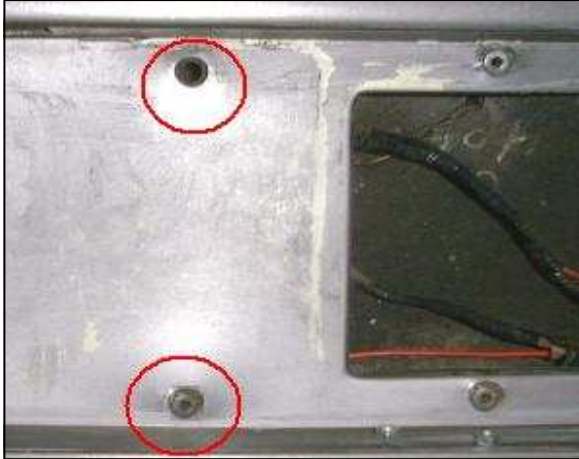


FITTING YOUR DELOREAN NUMBERPLATE SURROUND

1) Remove both rear lamp assemblies and lay the bulb holder carefully in the bumper and then remove the existing number plate surround.

The holes in the fascia used to attach the original surround have riv-nuts in them (circled in red), these need to be removed.



2) Remove the riv-nuts using a large drill and carefully drilling the heads off, they will soon fall away leaving a large hole.



3) Position the surround in place so that all of the studs go through the existing holes.

Reach through the aperture and attach the nuts and washers to the studs. You should be able to get a small spanner in to nip them up securely.



4) Once secured, re-install your light holders and lenses. Then stand back and admire your work!



Finished